

A Little Plain Talk.

Let us have a little plain talk. I want to know if the Appeal is doing the work it should do.

Comrades of America, do you stand for that? Do you? As I said above, it is time for this to be settled once for all.

I have provided for my children, I have provided for myself in my old age—all the rest I have given to this movement, my very life I have given to this work.

These few words are inspired by a remark made by Comrade Wallace, of Kansas City, at Socialist headquarters in that city a few days ago.

REBEL AT LARGE. Comrade May Beals, whose book of short stories, "The Rebel at Large," is ready for sale, writes as follows:

When I had finished speaking there such a rush for Appeals as I never saw before. Some of them followed me down the track and asked questions.

It's always the other fellow who is narrow minded. I have finished speaking there such a rush for Appeals as I never saw before.

Party Progress.

NATIONAL SECRETARY. The address of the national secretary of the Socialist Party is as follows:

The National Executive Committee of the Socialist Party of America calls the attention of the comrades to the apparent intention of the capitalist interests of the United States to put upon the statute books of the various states so-called primary election laws.

Two locals have been chartered during the month of April by the state secretary of West Virginia, George B. Kline.

Total receipts and expenditures of the national office from January 1, 1934, to February 1, 1935, inclusive: Total receipts, \$34,288.89; total expenditures, \$34,257.27.

The Cooperative state committee sold 1044 due stamps to 18 locals during the quarter ending March 31.

Robert Sallie, national German organizer, reports good meetings in Germany, France and the United States.

State Secretary George B. Kline, of Missouri, writes: "The tour of Comrade Ida Crouch Hurd..."

Financial report submitted by State Secretary Strickland is as follows for the month of April: Total receipts, \$18,777; total expenditures, \$18,128.

State Secretary T. E. Palmer's financial report for month of April is as follows: Total receipts, \$41,257; total expenditures, \$41,128.

Charter has been granted to a newly organized local at Warren, Missouri.

Our five Socialist members of the legislature have done excellent work during the present session.

Hot Cinders.

By E. N. Richardson.



Don't overlook the barbers' fund—it's a dollar well invested. Comrade O. A. Strong, of Williston, N. D., plays the 5 spot for \$1.25.

Comrade R. H. Beas, Harvard, Neb., gets to bat with a seven-time hit. Beat it if you can.

The hustlers' record book shows four more credit marks for Comrade C. W. Fleming, of Geneva, O.

Comrade Chas. J. Reynolds, Murray, Utah, orders four sub cards. Hurry them back, brother, and boost the list.

Comrade M. Burghart, of Fairfield, Neb., boosts the list six notches. Nebraska is on the Socialist map all right.

You'll find it in the Question Box. Send your address and a dime and you'll find the Question Box at your postoffice.

"Am with the Appeal until the crack of doom," says Comrade Krahn, of Watonga, Okla., as he passes in his latest list of ten.

Don't forget that you get a copy of Mill's great book, "The Struggle for Existence," free of charge for a club of 35 yearly subs.

The old Appeal Army is a little slow to move, but when it does move whatever it goes after had better sit up and take notice.

Don't fail to read the circulation report this week. Just note that the slump is getting sick and making ready to retire next week.

Party Progress.

The address of the national secretary of the Socialist Party is as follows: Socialist Party, 290 Dearborn street, Chicago, Ill.

The National Executive Committee of the Socialist Party of America calls the attention of the comrades to the apparent intention of the capitalist interests of the United States to put upon the statute books of the various states so-called primary election laws.

Two locals have been chartered during the month of April by the state secretary of West Virginia, George B. Kline.

Total receipts and expenditures of the national office from January 1, 1934, to February 1, 1935, inclusive: Total receipts, \$34,288.89; total expenditures, \$34,257.27.

The Cooperative state committee sold 1044 due stamps to 18 locals during the quarter ending March 31.

Robert Sallie, national German organizer, reports good meetings in Germany, France and the United States.

State Secretary George B. Kline, of Missouri, writes: "The tour of Comrade Ida Crouch Hurd..."

Financial report submitted by State Secretary Strickland is as follows for the month of April: Total receipts, \$18,777; total expenditures, \$18,128.

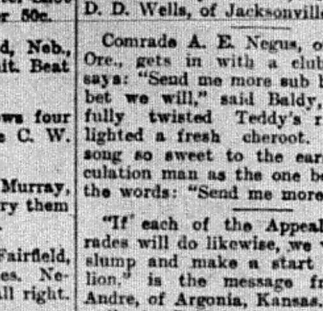
State Secretary T. E. Palmer's financial report for month of April is as follows: Total receipts, \$41,257; total expenditures, \$41,128.

Charter has been granted to a newly organized local at Warren, Missouri.

Our five Socialist members of the legislature have done excellent work during the present session.

Hot Cinders.

By E. N. Richardson.



Don't overlook the barbers' fund—it's a dollar well invested. Comrade O. A. Strong, of Williston, N. D., plays the 5 spot for \$1.25.

Comrade R. H. Beas, Harvard, Neb., gets to bat with a seven-time hit. Beat it if you can.

The hustlers' record book shows four more credit marks for Comrade C. W. Fleming, of Geneva, O.

Comrade Chas. J. Reynolds, Murray, Utah, orders four sub cards. Hurry them back, brother, and boost the list.

Comrade M. Burghart, of Fairfield, Neb., boosts the list six notches. Nebraska is on the Socialist map all right.

You'll find it in the Question Box. Send your address and a dime and you'll find the Question Box at your postoffice.

"Am with the Appeal until the crack of doom," says Comrade Krahn, of Watonga, Okla., as he passes in his latest list of ten.

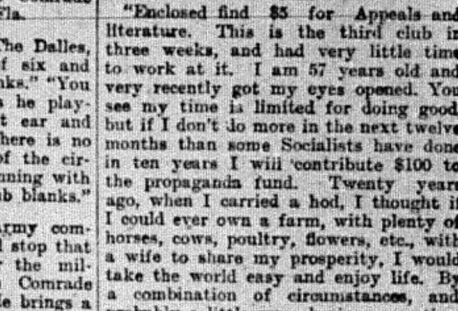
Don't forget that you get a copy of Mill's great book, "The Struggle for Existence," free of charge for a club of 35 yearly subs.

The old Appeal Army is a little slow to move, but when it does move whatever it goes after had better sit up and take notice.

Don't fail to read the circulation report this week. Just note that the slump is getting sick and making ready to retire next week.

Hot Cinders.

By E. N. Richardson.



Don't overlook the barbers' fund—it's a dollar well invested. Comrade O. A. Strong, of Williston, N. D., plays the 5 spot for \$1.25.

Comrade R. H. Beas, Harvard, Neb., gets to bat with a seven-time hit. Beat it if you can.

The hustlers' record book shows four more credit marks for Comrade C. W. Fleming, of Geneva, O.

Comrade Chas. J. Reynolds, Murray, Utah, orders four sub cards. Hurry them back, brother, and boost the list.

Comrade M. Burghart, of Fairfield, Neb., boosts the list six notches. Nebraska is on the Socialist map all right.

You'll find it in the Question Box. Send your address and a dime and you'll find the Question Box at your postoffice.

"Am with the Appeal until the crack of doom," says Comrade Krahn, of Watonga, Okla., as he passes in his latest list of ten.

Don't forget that you get a copy of Mill's great book, "The Struggle for Existence," free of charge for a club of 35 yearly subs.

The old Appeal Army is a little slow to move, but when it does move whatever it goes after had better sit up and take notice.

Don't fail to read the circulation report this week. Just note that the slump is getting sick and making ready to retire next week.

SENSATIONAL OFFER \$2.95 This 20 Year Guaranteed Watch for \$2.95

RUBBER STAMPS. J. W. McKinzie, Girard, Ka. EARLY A HOME—For particulars address (with stamp) The Colorado Co-operative Company, P.O. Box 100, Colo.

CONSUMERS' UNION. A Simpler Socialism. Single Lesson, 10 cts. Complete Lessons, \$1. Leader, 2 cts. 117 W. Randolph St. Chicago.

Is It Buncoing System or Banking System? This competitive system is what General Sherman said of war—it is HELL!

No Street Offer Ever Made \$100,000 CAPITAL STOCK NON-ASSESSABLE Mines Are Located Near Silverton, Colorado.

VARICOELES CURED AT HOME RELIABLE. R. E. CHALMERS & CO., 356 DEARBORN ST., CHICAGO, ILL.

THE INTERNATIONAL LABORERS' UNION. A scientific industrial organization of all branches of LABORERS for improved living conditions.

Cheap Rates to California ONE WAY Double Daily March 1st to May 15th, 1935, inclusive

THE ONLY RAILWAY RUNNING THROUGH TRAINS UNDER ONE MANAGEMENT CHICAGO TO CALIFORNIA Through Trains Cross the Great San Joaquin Valley by Daylight

A FINE KIDNEY CURE. At Rock Island, Ill. the ladies have organized an auxiliary to the local branch which will be held in the gymnasium at the park on Sunday.

WING PIANOS Are Sold Direct from the Factory, and in No Other Way You Save from \$75 to \$200

WING PIANOS Are Sold Direct from the Factory, and in No Other Way You Save from \$75 to \$200

WING PIANOS Are Sold Direct from the Factory, and in No Other Way You Save from \$75 to \$200

WING PIANOS Are Sold Direct from the Factory, and in No Other Way You Save from \$75 to \$200

WING PIANOS Are Sold Direct from the Factory, and in No Other Way You Save from \$75 to \$200

